

Definitive Site Plan

Issued for: Permit

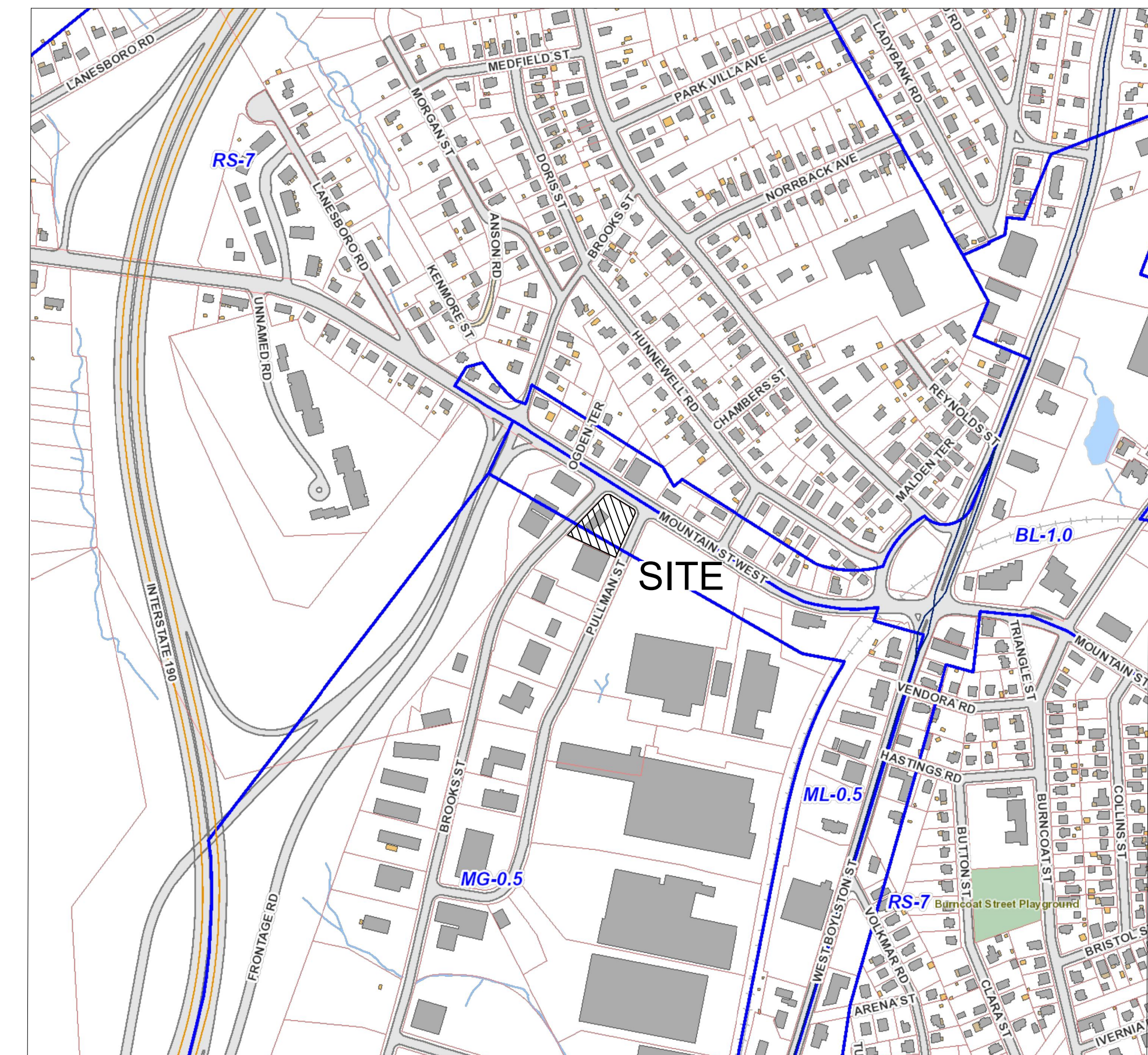
Date Issued: January 30, 2024

Latest Issue: February 28, 2024

Commercial Redevelopment

79 Pullman Street

Worcester, MA 01606



Sheet Index

Number	Drawing Title	Latest Issue
C-1	Site Preparation, Erosion & Sediment Control Plan	2/28/2024
C-2	Layout & Materials Plan	2/28/2024
C-3	Grading Plan	2/28/2024
C-4	Drainage & Utility Plan	2/28/2024
C-5	Site Construction Details 1	2/28/2024
C-6	Site Construction Details 2	2/28/2024
C-7	Site Construction Details 3	2/28/2024
LA-1	Planting Plan	2/28/2024
SE-1	Site Lighting Photometric Plan	2/28/2024
	Approval Not Required Plan of Land	2/28/2024

Legend

Exist.	Prop.	Exist.	Prop.	
				CONCRETE
				SPOT ELEVATION
				DRAIN
				ROOF DRAIN
				SEWER
				FIRE PROTECTION
				DOMESTIC WATER
				GAS
				ELECTRIC
				TELEPHONE
				CATCH BASIN
				DRAIN MANHOLE
				CLEANOUT
				SEWER MANHOLE
				CURB STOP & BOX
				WATER VALVE & BOX
				TAPPING SLEEVE, VALVE & BOX
				GAS GATE
				GAS METER
				ELECTRIC MANHOLE
				ELECTRIC METER
				LIGHT POLE
				TELEPHONE MANHOLE
				UTILITY POLE
				HAND HOLE

Abbreviations

General		Utility	
ABAN	ABANDON	CB	CATCH BASIN
ACR	ACCESSIBLE CURB RAMP	CO	CLEANOUT
ADJ	ADJUST	DCB	DOUBLE CATCH BASIN
APPROX	APPROXIMATE	DMH	DRAIN MANHOLE
BIT	BITUMINOUS	COND	CONDUIT
CONC	CONCRETE	DIP	DUCTILE IRON PIPE
ELEV	ELEVATION	F&G	FRAME AND GRATE
EXIST	EXISTING	F&C	FRAME AND COVER
FFE	FIRST FLOOR ELEVATION	GJ	GUTTER INLET
GRAN	GRANITE	GT	GREASE TRAP
GTD	GRADE TO DRAIN	HDPE	HIGH DENSITY POLYETHYLENE PIPE
LA	LANDSCAPE AREA	HH	HANDHOLE
LOD	LIMIT OF DISTURBANCE	HYD	HYDRANT
MAX	MAXIMUM	INV	INVERT ELEVATION
MIN	MINIMUM	I=	INVERT ELEVATION
NTS	NOT TO SCALE	LP	LIGHT POLE
PERF	PERFORATED	MES	METAL END SECTION
PROP	PROPOSED	PVC	POLYVINYLCHLORIDE PIPE
REM	REMOVE	RCP	REINFORCED CONCRETE PIPE
R&D	REMOVE AND DISPOSE	R=	RIM ELEVATION
R&R	REMOVE AND RESET	SMH	SEWER MANHOLE
TYP	TYPICAL	TSV	TAPPING SLEEVE, VALVE AND BOX
		UG	UNDERGROUND
		UP	UTILITY POLE

Site Location Map



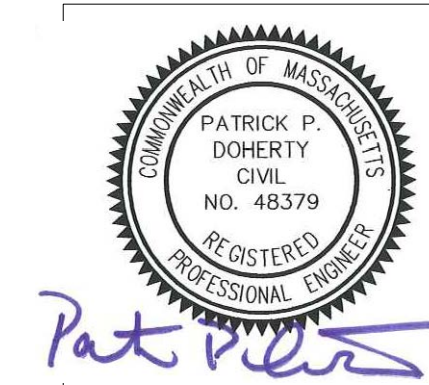
Scale 1" = 400"

Land Surveyor:
HS&T Group, Inc.
75 Hammond St - 2nd Floor
Worcester, MA 01610
508 757-4944

Owner / Applicant:
Lacy Topas, LLC
37 SUTTON ROAD - Suite 1
WEBSTER, MA 01570
(508) 721-0005

MIDPOINT

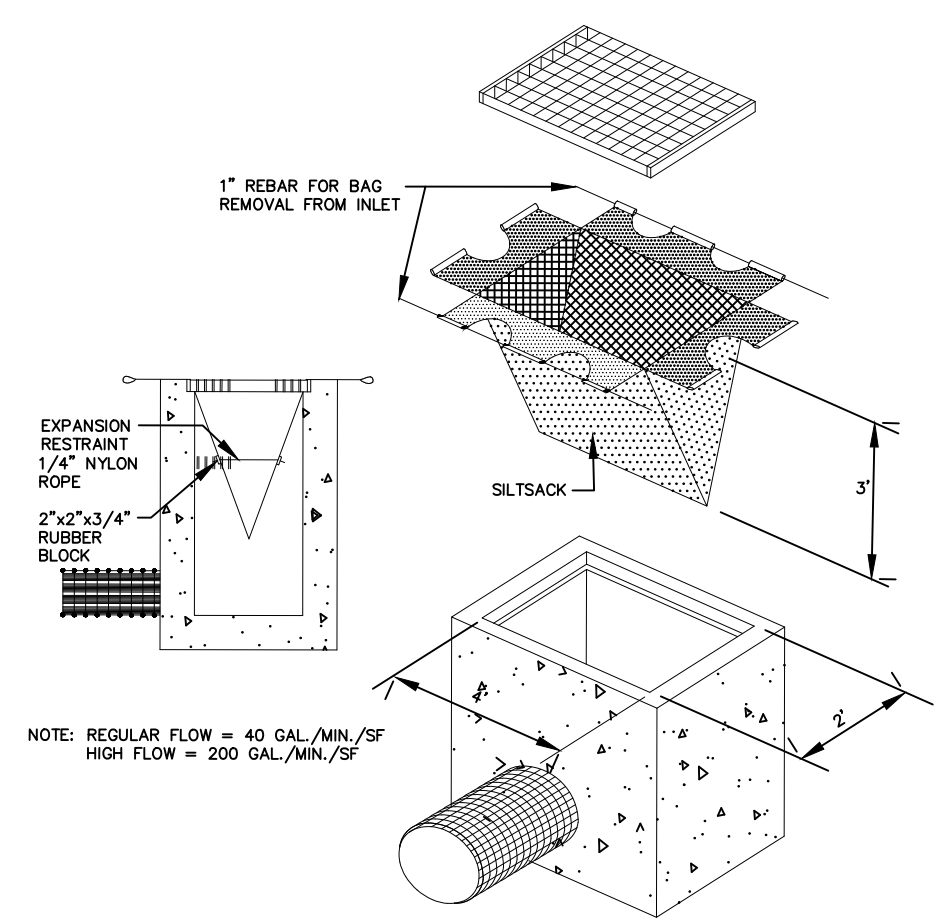
ENGINEERING + CONSULTING



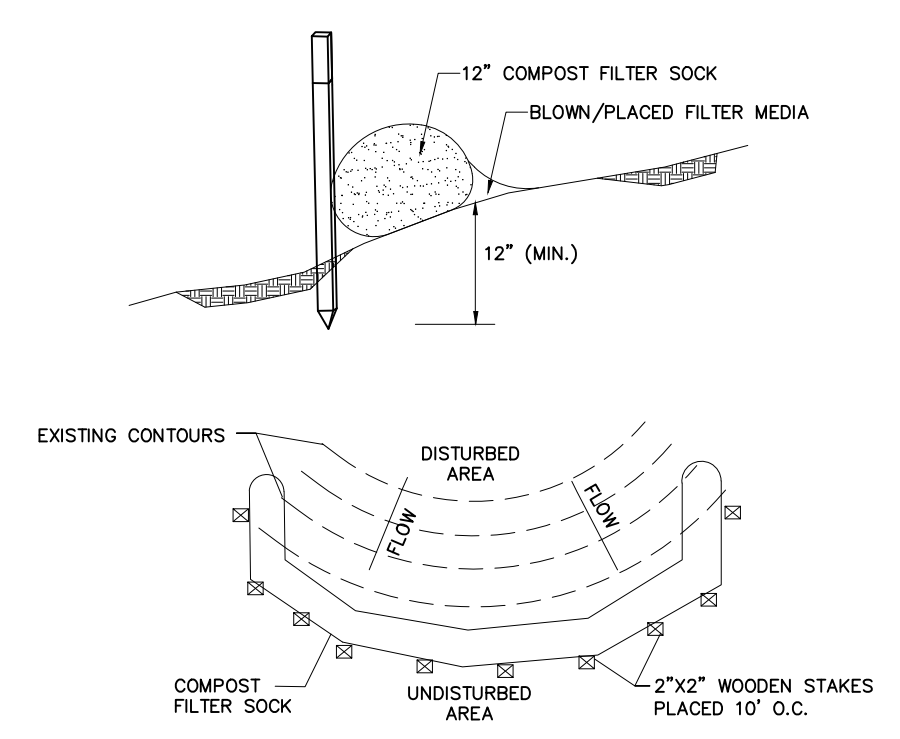
MIDPOINT ENGINEERING + CONSULTING
37 SUTTON ROAD
WEBSTER, MA 01570
(508) 721-1900
pdoherty@midpointengineering.com

Assessor Map 23; Block/Lot01A-0006A

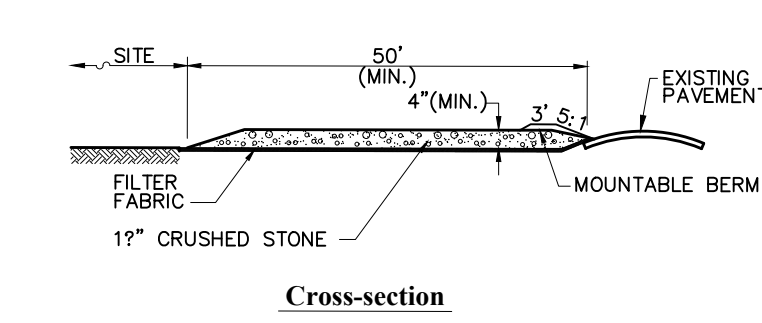
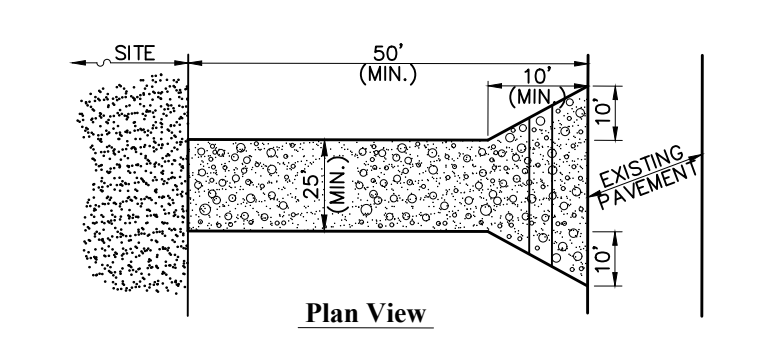
79 Pullman Street
Zoning District: ML 0.5 & MG 0.5



J12 CATCHBASIN SEDIMENT TRAP
 N.T.S.

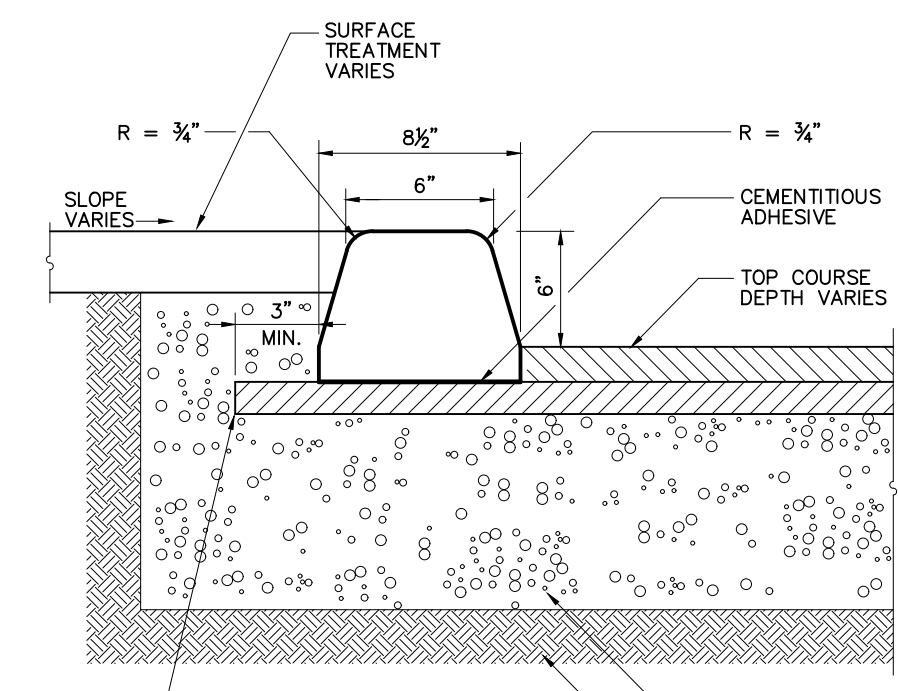


N.T.S. COMPOST FILTER SOCK



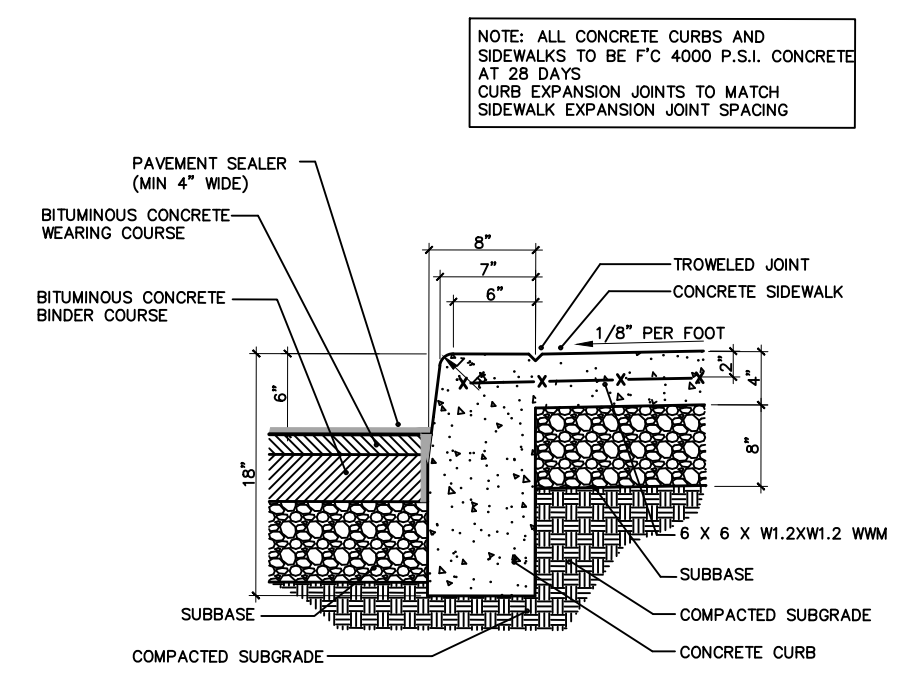
- Notes:**
- ENTRANCE WIDTH SHALL BE A TWENTY-FIVE (25) FOOT MINIMUM, BUT NOT LESS THAN THE FULL WIDTH AT POINTS WHERE INGRESS OR EGRESS OCCURS.
 - THE ENTRANCE SHALL BE MAINTAINED IN A CONDITION WHICH SHALL PREVENT TRACKING OR FLOWING OF SEDIMENT ONTO PUBLIC RIGHTS-OF-WAY. THIS MAY REQUIRE PERIODIC TOP DRESSING WITH ADDITIONAL STONE AS CONDITIONS DEMAND AND REPAIR OR CLEANOUT OF ANY MEASURES USED TO TRAP SEDIMENT. ALL SEDIMENT SPILLED, DROPPED, WASHED OR TRACKED ONTO PUBLIC RIGHTS-OF-WAY MUST BE REMOVED IMMEDIATELY. BERM SHALL BE PERMITTED. PERIODIC INSPECTION AND MAINTENANCE SHALL BE PROVIDED AS NEEDED.
 - STABILIZED CONSTRUCTION EXIT SHALL BE REMOVED PRIOR TO FINAL FINISH MATERIALS BEING INSTALLED.

A12 STABILIZED CONSTRUCTION ENTRANCE
 N.T.S.



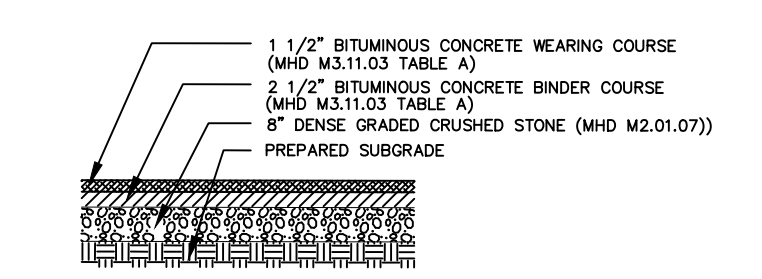
- Notes:**
- ECC REFERS TO EXTRUDED CONCRETE CURB WHICH IS CAST-IN-PLACE IN THE FIELD.
 - WHEN ECC IS USED, CONTRACTOR IS TO DETERMINE THE EXTENDED LAYOUT DIMENSIONS OF THE BASE COURSE IN ORDER TO ACCOMMODATE PLACEMENT OF THE ECC.

N.T.S. EXTRUDED CONCRETE CURB (ECC)



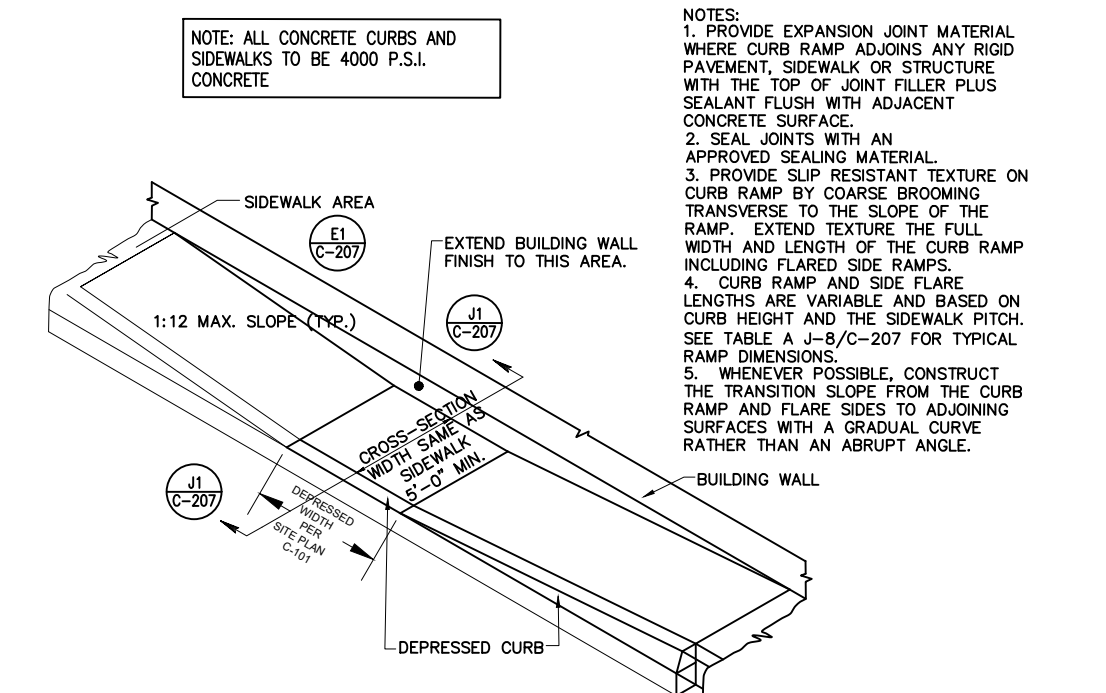
- Notes:**
- ECC REFERS TO EXTRUDED CONCRETE CURB WHICH IS CAST-IN-PLACE IN THE FIELD.
 - WHEN ECC IS USED, CONTRACTOR IS TO DETERMINE THE EXTENDED LAYOUT DIMENSIONS OF THE BASE COURSE IN ORDER TO ACCOMMODATE PLACEMENT OF THE ECC.

N.T.S. CURB DETAIL WITH MONOLITHIC SIDEWALK ONSITE



- Notes:**
- THE MINIMUM REQUIRED THICKNESS ARE SHOWN IN THE DETAIL. USE LOCAL DOT PAVEMENT MIX DESIGN FOR WEARING AND BINDER COURSES.

N.T.S. HMA PAVEMENT (ON SITE)



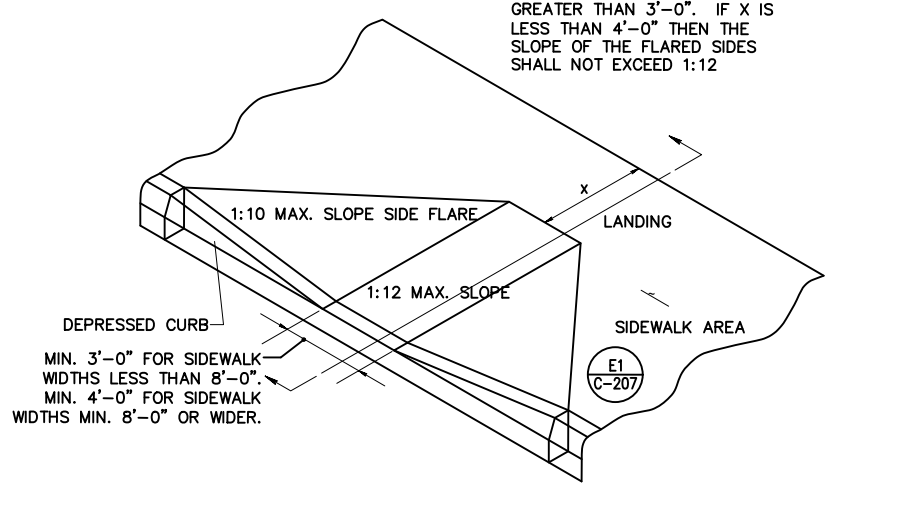
CURB RAMP DIMENSIONS NEW CONSTRUCTION

RISE OF RAMP	MAX. RAMP SLOPE	NOMINAL RAMP LENGTH	SIDE FLARE DIMENSION AT CURB	SIDE FLARE DIMENSION AT CURB
3"	1 : 12	3.0 FT.	2.5 FT.	3.0 FT.
4"	1 : 12	4.0 FT.	3.3 FT.	4.0 FT.
5"	1 : 12	5.0 FT.	4.2 FT.	5.0 FT.
6"	1 : 12	6.0 FT.	5.0 FT.	6.0 FT.
7"	1 : 12	7.0 FT.	5.8 FT.	7.0 FT.
8"	1 : 12	8.0 FT.	6.7 FT.	8.0 FT.
9"	1 : 12	9.0 FT.	7.5 FT.	9.0 FT.
10"	1 : 12	10.0 FT.	8.4 FT.	10.0 FT.
11"	1 : 12	11.0 FT.	9.2 FT.	11.0 FT.
12"	1 : 12	12.0 FT.	10.0 FT.	12.0 FT.

CURB RAMP DIMENSIONS EXISTING CONDITION *

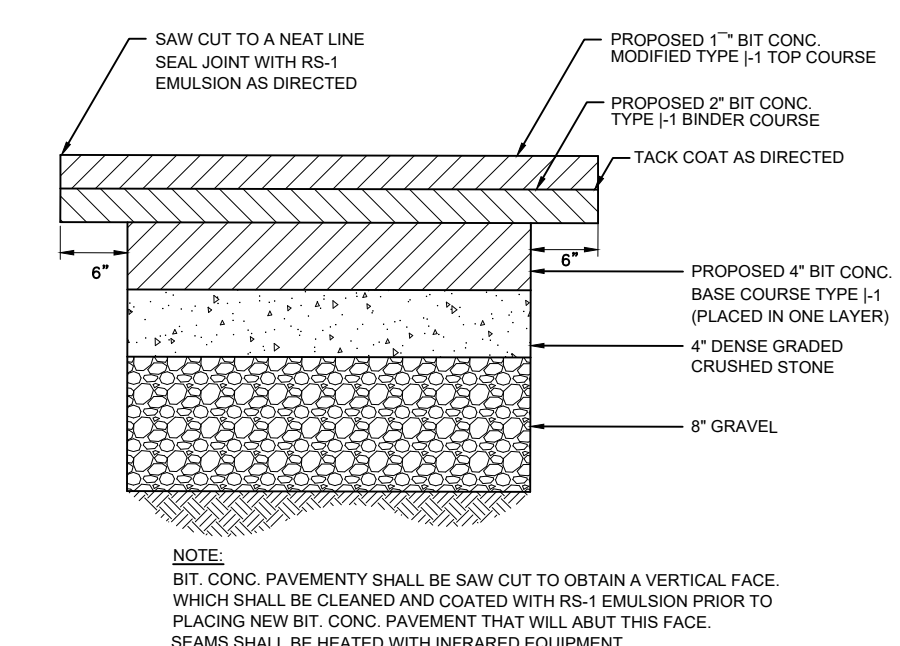
MAX. RISE OF RAMP	MAX. RAMP SLOPE	NOMINAL RAMP LENGTH	SIDE FLARE DIMENSION AT CURB	SIDE FLARE DIMENSION AT CURB
3"	1 : 8	2.0 FT.	2.5 FT.	3.0 FT.
4"	1 : 10	3.3 FT.	3.3 FT.	4.0 FT.
5"	1 : 10	4.2 FT.	4.2 FT.	5.0 FT.
6"	1 : 10	5.0 FT.	5.0 FT.	6.0 FT.

- * USE ONLY WHEN SPACE LIMITATIONS PROHIBIT THE CONSTRUCTION OF 1 : 12 OR FLATTER SLOPES.
 * CURB HEIGHT PLUS RISE OF SIDEWALK CROSS SLOPE

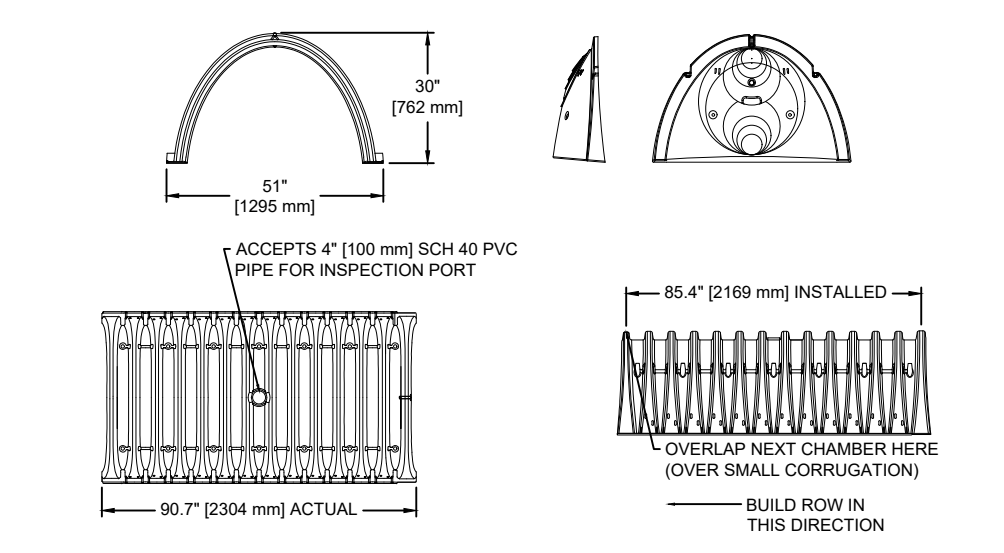
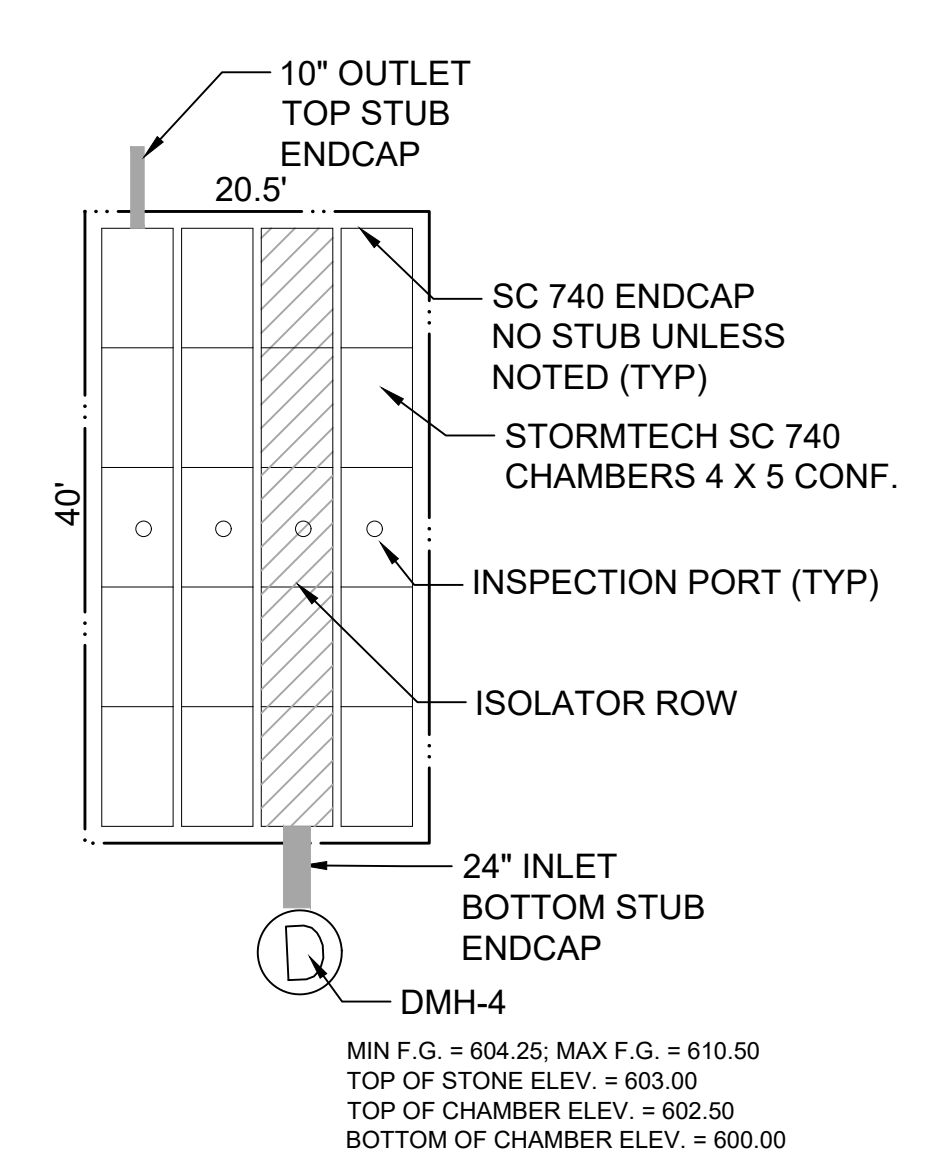


- Notes:**
- ALL CONCRETE CURBS AND SIDEWALKS TO BE 4000 P.S.I. CONCRETE.
 - RAMP FINISH TO BE SLIP RESISTANT TEXTURE BY COURSE BROOMING TRANSVERSE TO THE SLOPE OF THE RAMP. EXTEND TEXTURE THE FULL WIDTH AND LENGTH OF THE CURB RAMP INCLUDING FLARED SIDE RAMP.

N.T.S. CURB RAMP DETAIL



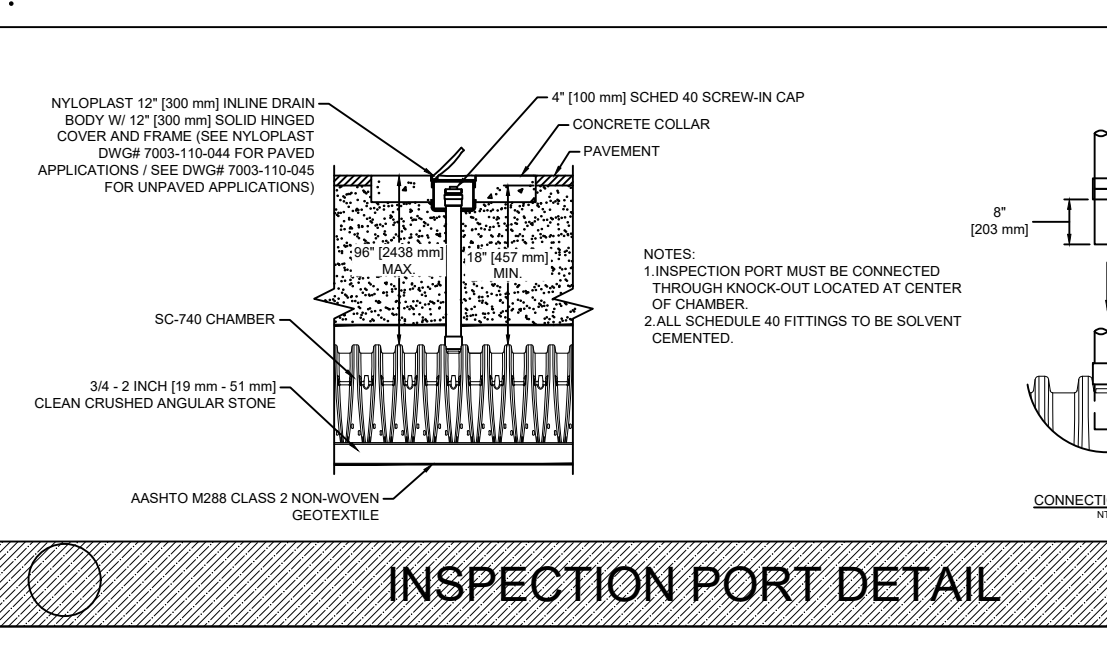
N.T.S. FULL DEPTH PAVEMENT REPAIR



NOMINAL CHAMBER SPECIFICATIONS

SIZE (W x H x INSTALLED LENGTH)	CHAMBER STORAGE	MINIMUM INSTALLED STORAGE WEIGHT
51.0" x 30.0" x 85.4" [1295 mm x 762 mm x 2169 mm]	45.9 CUBIC FEET [1.30 m ³]	74.9 CUBIC FEET [2.12 m ³]
		75 lbs. [33.6 kg]

N.T.S. RECHARGE CHAMBER SYSTEM UG-1 StormTech SC 740 4 x 5 Configuration UNDERGROUND CHAMBER SYSTEM UC-1

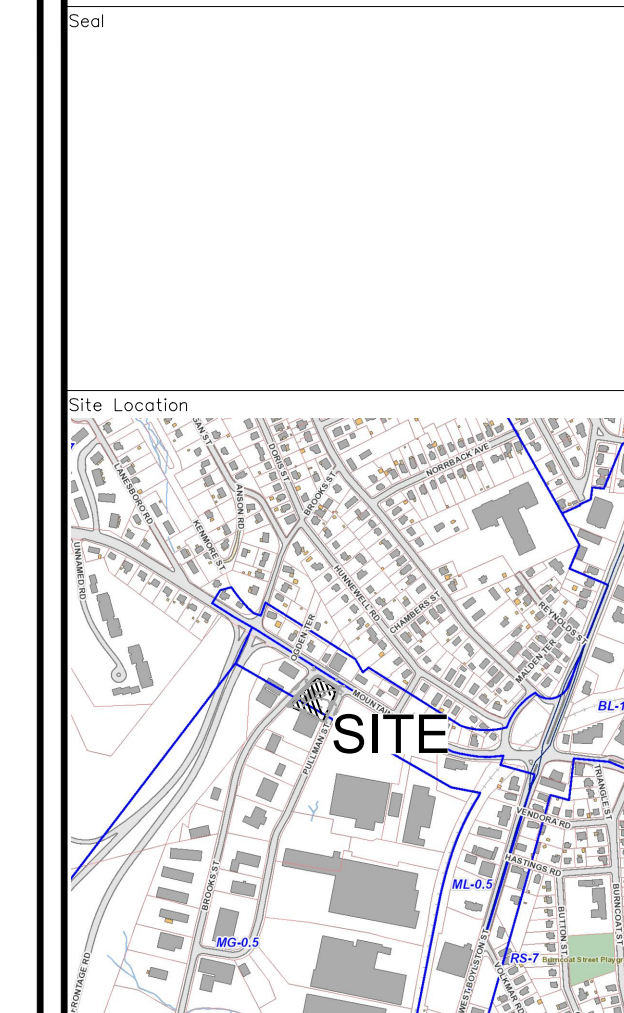


N.T.S. INSPECTION PORT DETAIL

ACCEPTABLE FILL MATERIALS: STORMTECH SC-740 CHAMBER SYSTEMS

MATERIAL LOCATION	DESCRIPTION	AASHTO M43 DESIGNATION	COMPACTION/DENSITY REQUIREMENT
1. FILL MATERIAL COVER LAYER TO STARTS FROM THE TOP OF THE 12" LAYER TO THE BOTTOM OF THE FLOORED PAVEMENT OR UNPAVED FRESH GRADE ABOVE. NOTE THAT PAVEMENT SUBGRADE MAY BE PART OF THIS LAYER.	ANY SUFFICIENT MATERIALS, NATURAL SOILS OR PER ENGINEERS PLANS. CHECK PLANS FOR PAVEMENT SUBGRADE REQUIREMENTS.	N/A	PERFORM PER ENGINEERS PLANS. PAVED INSTALLATIONS MAY HAVE STRINGENT MATERIAL AND PREPARATION REQUIREMENTS.
2. FILL MATERIAL FOR LAYER 12" STARTS FROM THE TOP OF THE SUBGRADE TO THE TOP OF THE CHAMBER. NOTE THAT PAVEMENT SUBGRADE MAY BE PART OF THIS LAYER.	GRANULAR WELL-GRADED SOIL-AGGREGATE MATERIALS, 1.50" (38.1 mm) MAXIMUM SIZE DISTRIBUTION SHALL BE USED IN LIEU OF THIS LAYER.	3.357 & 4.467, 5.16, 5.7, 6.41, 6.87, 7.4, 8.16, 8.9	BEFORE CONSTRUCTION AFTER 100' (30.5 m) OF MATERIAL COVER THE CHAMBER IS TRACKED, COMPACT APPLICATIONS. PROCTOR DENSITY ROLLER GROSS WEIGHT SHOULD NOT EXCEED 20,000 lb (90 kN).
3. EMBEDEDMENT TEXTURE SURROUNDING THE CHAMBER FROM THE INSPECTION PORT TO THE TOP OF THE CHAMBER.	CLEAN, CRUSHED, ANGULAR STONE, MINIMUM SIZE DISTRIBUTION SHALL BE USED IN LIEU OF THIS LAYER.	3.357 & 4.467, 5.16, 5.7	NO COMPACTION REQUIRED.
4. SUBGRADE TO BE REMOVED FROM BELOW CHAMBERS FROM THE SUBGRADE UP TO THE FOOT (BOTTOM) OF THE CHAMBER.	CLEAN, CRUSHED, ANGULAR STONE, MINIMUM SIZE DISTRIBUTION SHALL BE USED IN LIEU OF THIS LAYER.	3.357 & 4.467, 5.16, 5.7	PERFORM PER ENGINEERS PLANS. PAVED INSTALLATIONS MAY HAVE STRINGENT MATERIAL AND PREPARATION REQUIREMENTS.

N.T.S. STORMTECH ACCEPTABLE FILL MATERIALS



Prepared For:
LACY TOPAZ, LLC
 37 SUTTON ROAD
 WEBSTER, MA 01570
 (508) 721-0005

Date: **Jan. 30, 2024** Scale: **1" = 20'**

No.	Revision	Date
1	REVIEW COMMENTS	2/28/24

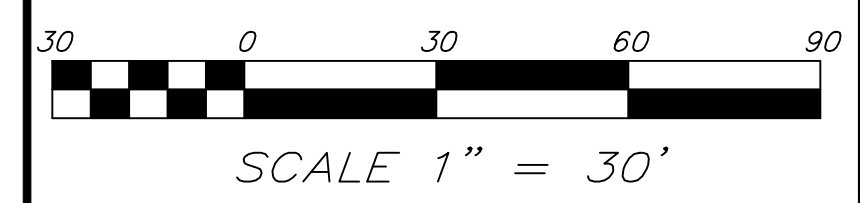
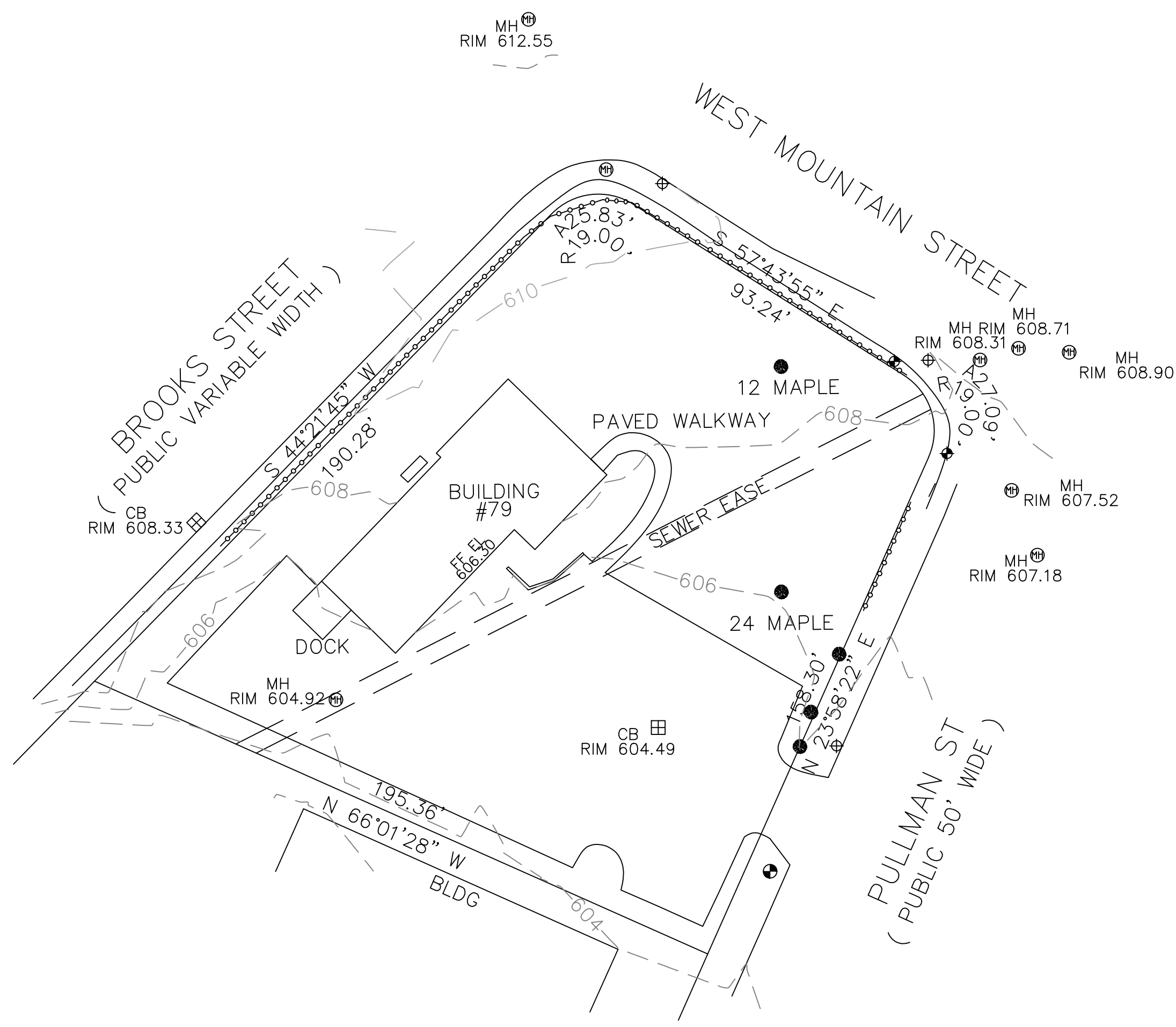
Project Title:
PROPOSED COMMERCIAL REDEVELOPMENT
 79 PULLMAN ST
 Worcester, MA

Issued For:
Permit

Drawing Title:
Not for Construction

Site Details 2

C-6



PLAN REFERENCE(S):
493-49, 389-121, 891-55

DEED REFERENCE(S):
22403-115

THIS PLAN SHOWS THE PROPERTY LINES THAT ARE THE LINES OF EXISTING OWNERSHIPS AND THE LINES OF STREETS AND WAYS SHOWN ARE THOSE OF PUBLIC OR PRIVATE STREETS OR WAYS ALREADY ESTABLISHED AND THAT NO NEW LINES FOR DIVISION OF OWNERSHIP OR FOR NEW WAYS ARE SHOWN.



THIS PLAN HAS BEEN PREPARED IN CONFORMITY WITH THE RULES AND REGULATIONS OF THE REGISTER OF DEEDS OF THE COMMONWEALTH OF MASSACHUSETTS.

hs&t group, inc.
 PROFESSIONAL CIVIL ENGINEERS & LAND SURVEYORS
 75 HAMMOND STREET - 2ND FLOOR
 WORCESTER, MASSACHUSETTS 01610-1723
 PHONE: 508-757-4944 EMAIL: INFO@HSTGROUP.NET
 FAX: 508-752-8895 WWW.HSTGROUP.NET

EXISTING CONDITIONS PLAN
79 PULLMAN ST WORCESTER MA

APPLICANT(S)/OWNER(S):
GALAXY DEVELOPMENT

DATE:	01-19-22	COMP'D:	JT	FIELD:	PS
SCALE:	1"=40'	CAD:	JT	FLD. BK:	664-20
ZONE:	ML-5, MG--5	REV'D:	DJT	PULLMAN79SITE	

JOB NUMBER:	7405	SHEET NUMBER:	1 OF 1
DWG NUMBER:	2007		